



Aspecta BV
Argon 37a
4751XC Oud Gastel
The Netherlands
+31 (0)88-1662500
info@aspectaflooring.com
www.aspectaflooring.com

EU-NOV-2014

A NEW DIMENSION IN FLOORING

IT'S JUST THE BEGINNING

Innovation is in our foundation. It's the reason we continue to lead the way as the credible LVT specialist, realized through outstanding distribution, unrivalled global reach and groundbreaking product development.

We're now set to change what's possible within commercial LVT. Aspecta 5 is the culmination of everything that's gone before. A new dimension in flooring backed by years of industry expertise. Designed completely around you, your clients and your vision, it confirms our place as the world's only specialist within LVT commercial flooring.



A STORY BACKED BY YEARS OF EXPERTISE

We've always been innovators. Right from day one when the Stone family opened a new kind of building materials distribution company Metroflor in 1912. Champions of their craft, the Stones became part of an exciting new generation of pioneers - journeying far and wide to source the finest materials and learn groundbreaking techniques.

A century of firsts followed. Metroflor was the first company to develop a pure, homogenous vinyl floor tile. The first to introduce a new flooring concept from Taiwan - now known as LVT. And the first to transform the flooring market with a floating floor system. All these and more have been developed with the customer firmly at heart, with a focus on greater ease of use to help architects and installers work better and smarter.

Today we're set to unveil the next revolutionary chapter in the story.



STONE & MASONRY
A RANGE OF 33 TILES

PEDONA - COLOUR: CADET - PATTERN# 5994107



WOODS
A RANGE OF 52 PLANKS

TREATED OAK - COLOUR: OXIDIZED - PATTERN# 5392106



ABSTRACTS
A RANGE OF 24 ABSTRACTS

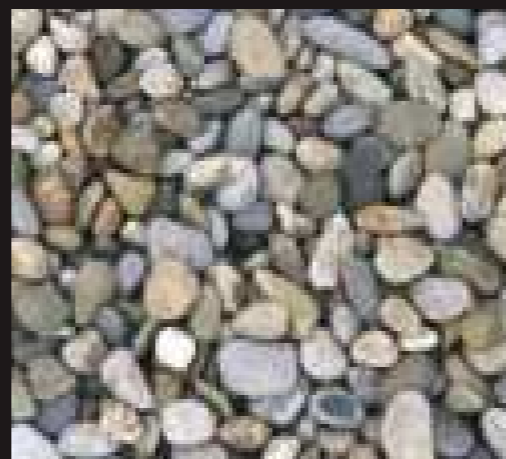
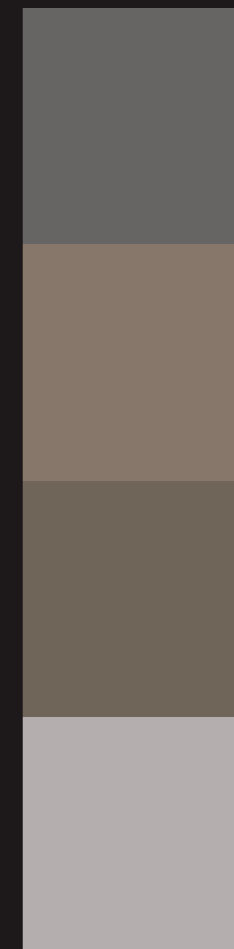
TARNISH - COLOUR: FLAME - PATTERN# 5841412



**STONE &
MASONRY**

STONE & MASONRY FROM YESTERDAY TO TOMORROW

Our stone and masonry tiles flit seamlessly between counter contemporary and tomorrow's digital world. It's the perfect mix. So whatever the market, application or vision, you'll find limitless opportunities to create truly iconic and enduring spaces that outperform the rest.

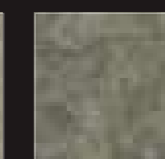


PYRITE - SAND

COLOUR RANGE



LICHEN



ORE



PAMPAS



LITHIC STONE

PATTERN#: 5862102 - **COLOUR:** TINDER

SIZE: 12" x 24"/304.8mm x 609.6mm
EMBOSS: In-Register
EDGE DETAIL: Micro-Bevel

DESCRIPTION

Perfect for those casual hospitality and retail interiors where the use of more rustic wood treatments can create a true sense of outdoors. The mellow blending of colours imitates the subtle variances in nature.

Full spec available at www.aspecta flooring.com

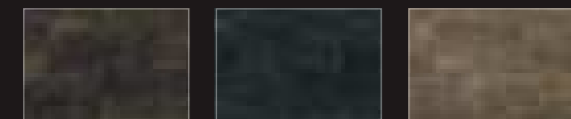
SUSTAINABILITY

Discover just how sustainable Aspecta flooring is.

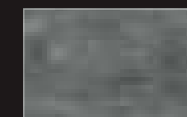
www.aspecta flooring.com/sustainability



COLOUR RANGE



PATTERN#: 5862105 **COLOUR:** DARK BROWN
PATTERN#: 5862108 **COLOUR:** CHARCOAL
PATTERN#: 5862110 **COLOUR:** SEDGE



PATTERN#: 5862111
COLOUR: GREY



PEDONA

PATTERN#: 5994101 - **COLOUR:** NOIR

SIZE: 18" x 18"/457.2mm x 457.2mm
EMBOSS: Pebble
EDGE DETAIL: Micro-Bevel

DESCRIPTION

A traditional approach that when paired with more austere materials can create an exciting, unexpected look. Its layered markings of time effectively capture the feel of polished stone.

Full spec available at www.aspecta flooring.com

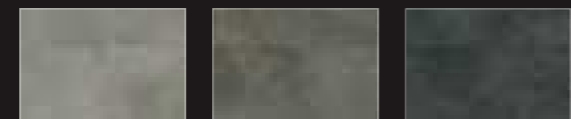
SUSTAINABILITY

Discover just how sustainable Aspecta flooring is.

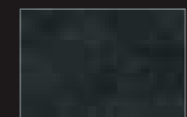
www.aspecta flooring.com/sustainability



COLOUR RANGE



PATTERN#: 5994102 **COLOUR:** GLACE
PATTERN#: 5994105 **COLOUR:** PACIFIC
PATTERN#: 5994107 **COLOUR:** CADET



PATTERN#: 5994110
COLOUR: LAMP BLACK



PYRITE

PATTERN#: 5759513 - **COLOUR:** SAND

SIZE: 24" x 24"/609.6mm x 609.6mm
EMBOSS: Satin
EDGE DETAIL: Micro-Bevel

DESCRIPTION

This unique stone features an innovative structural pattern, offering rich figuring and a decorative quality that best lends itself to more traditional spaces.

Full spec available at www.aspecta flooring.com

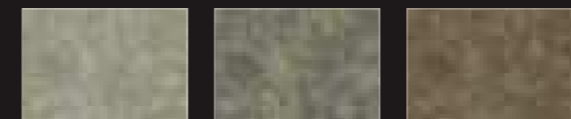
SUSTAINABILITY

Discover just how sustainable Aspecta flooring is.

www.aspecta flooring.com/sustainability



COLOUR RANGE



PATTERN#: 5759514 **COLOUR:** LICHEN
PATTERN#: 5759515 **COLOUR:** ORE
PATTERN#: 5759516 **COLOUR:** PAMPAS





TREMOLO MARBLE

PATTERN#: 5871102 - COLOUR: DOVE

SIZE: 12" x 24" / 304.8mm x 609.6mm
EMBOSS: Honed Stone
EDGE DETAIL: Micro-Bevel

DESCRIPTION

A recently discovered marble that runs in a soft linear motion for contemporary and minimalist looks in hospitality, corporate and retail interiors where services and products need the space to shine.

Full spec available at www.aspecta flooring.com

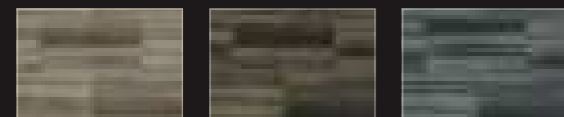
SUSTAINABILITY

Discover just how sustainable Aspecta flooring is.

www.aspecta flooring.com/sustainability



COLOUR RANGE



PATTERN#: 5871104 COLOUR: LATTE
PATTERN#: 5871105 COLOUR: JAVA
PATTERN#: 5871106 COLOUR: SHADOW



ADELINA STONE

PATTERN#: 5886101 - COLOUR: SORREL

SIZE: 12" x 24" / 304.8mm x 609.6mm
EMBOSS: In-Register
EDGE DETAIL: Micro-Bevel

DESCRIPTION

An earthy option that responds to the trend for linear patterns. A solid choice for both traditional and contemporary interiors, its statement is one of elegance in nature.

Full spec available at www.aspecta flooring.com

SUSTAINABILITY

Discover just how sustainable Aspecta flooring is.

www.aspecta flooring.com/sustainability



COLOUR RANGE



PATTERN#: 5886102 COLOUR: STORM
PATTERN#: 5886103 COLOUR: FAWN
PATTERN#: 5886104 COLOUR: SEPIA



MICA

PATTERN#: 5819118 - COLOUR: ADOBE

SIZE: 12" x 24" / 304.8mm x 609.6mm
EMBOSS: Honed Stone
EDGE DETAIL: Micro-Bevel

DESCRIPTION

Provides a gentle linear movement appropriate for more general areas. The variation of tonal quality makes it especially suitable for minimalist styling, however it can be a basic starting point for traditional, more heavily decorated spaces.

Full spec available at www.aspecta flooring.com

SUSTAINABILITY

Discover just how sustainable Aspecta flooring is.

www.aspecta flooring.com/sustainability



COLOUR RANGE



PATTERN#: 5819119 COLOUR: GREY
PATTERN#: 5819120 COLOUR: CLAY
PATTERN#: 5819122 COLOUR: MINERAL
PATTERN#: 5819123 COLOUR: DEEP BROWN



WASHED CONCRETE

PATTERN#: 5768101 - COLOUR: SILVER

SIZE: 24" x 24" / 609.6mm x 609.6mm
EMBOSS: Satin
EDGE DETAIL: Micro-Bevel
Also available by special order in 18" x 18" / 457.2mm x 457.2mm

DESCRIPTION

Imitates the smooth and porous surface of well-layered cement. This finely detailed 'workhorse' rendition finds its way into most interiors as the basic ground on which to build, with subtle washed colours adding an extra dimension.

Full spec available at www.aspecta flooring.com

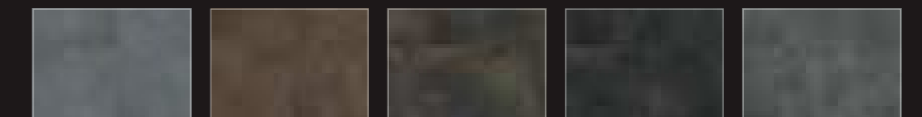
SUSTAINABILITY

Discover just how sustainable Aspecta flooring is.

www.aspecta flooring.com/sustainability



COLOUR RANGE



PATTERN#: 5768105 COLOUR: ZINC
PATTERN#: 5768106 COLOUR: COPPER
PATTERN#: 5768108 COLOUR: BRONZE
PATTERN#: 5768109 COLOUR: CARBON
PATTERN#: 5768111 COLOUR: IRON

Our 33 stone and masonry tiles offer unlimited opportunities. Explore the range and benefit from years of know-how. Everything that bears the Aspecta 5 name has been meticulously designed using the very latest innovations in flooring, ensuring it not only looks the part but it's built to last too.

LITHIC STONE



PATTERN#: 5862102
COLOUR: TINDER

PATTERN#: 5862105
COLOUR: DARK BROWN

PATTERN#: 5862108
COLOUR: CHARCOAL

PATTERN#: 5862110
COLOUR: SEDGE

PATTERN#: 5862111
COLOUR: GREY

PEDONA



PATTERN#: 5994101
COLOUR: NOIR

PATTERN#: 5994102
COLOUR: GLACE

PATTERN#: 5994105
COLOUR: PACIFIC

PATTERN#: 5994107
COLOUR: CADET

PATTERN#: 5994110
COLOUR: LAMP BLACK

PYRITE



PATTERN#: 5759513
COLOUR: SAND

PATTERN#: 5759514
COLOUR: LICHEN

PATTERN#: 5759515
COLOUR: ORE

PATTERN#: 5759516
COLOUR: PAMPAS

TREMOLO MARBLE



PATTERN#: 5871102
COLOUR: DOVE

PATTERN#: 5871104
COLOUR: LATTE

PATTERN#: 5871105
COLOUR: JAVA

PATTERN#: 5871106
COLOUR: SHADOW

ADELINA STONE



PATTERN#: 5886101
COLOUR: SORREL

PATTERN#: 5886102
COLOUR: STORM

PATTERN#: 5886103
COLOUR: FAWN

PATTERN#: 5886104
COLOUR: SEPIA

MICA



PATTERN#: 5819118
COLOUR: ADOBE

PATTERN#: 5819119
COLOUR: GREY

PATTERN#: 5819120
COLOUR: CLAY

PATTERN#: 5819122
COLOUR: MINERAL

PATTERN#: 5819123
COLOUR: DEEP BROWN

WASHED CONCRETE



PATTERN#: 5768101
COLOUR: SILVER

PATTERN#: 5768105
COLOUR: ZINC

PATTERN#: 5768106
COLOUR: COPPER

PATTERN#: 5768108
COLOUR: BRONZE

PATTERN#: 5768109
COLOUR: CARBON

PATTERN#: 5768111
COLOUR: IRON

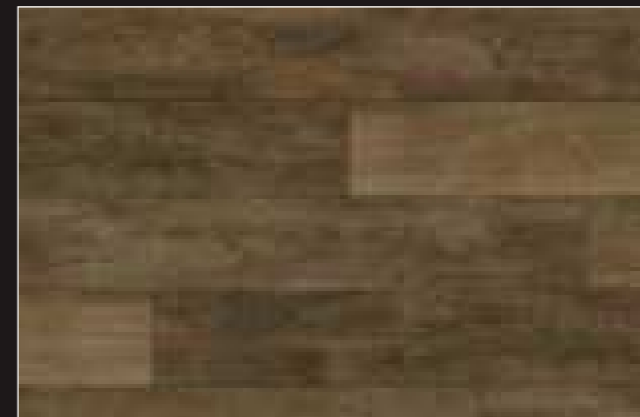


WOODS



WOODS INNOVATION ENGRAINED

With a wider range of embossing textures and a larger plank and print width for unparalleled realism, you'll find innovation is engrained throughout our stunning new woods.

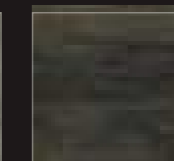


MASON OAK - AMBER

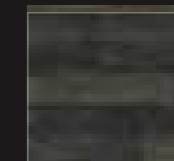
COLOUR RANGE



MIST



PUMICE



SEA



BLAIR CHERRY

PATTERN#: 5146103 - **COLOUR:** LIGHT

SIZE: 4" x 36"/101.6mm x 914.4mm
EMBOSS: Light Wood Tick
EDGE DETAIL: Square

DESCRIPTION

Cherry, the American "fruitwood", is a standard for furniture and flooring with its rich wine colours and subtle graining. The wood's rich heritage gives the classic Cherry a regal quality, but Blair Cherry favours a more modern design with a smoother grain and classic colours.

Full spec available at www.aspecta flooring.com

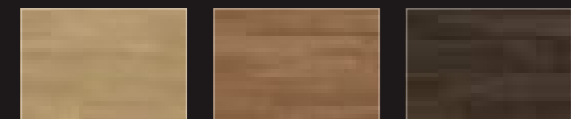
SUSTAINABILITY

Discover just how sustainable Aspecta flooring is.

www.aspecta flooring.com/sustainability



COLOUR RANGE



PATTERN#: 5146105 **COLOUR:** NATURAL
PATTERN#: 5146106 **COLOUR:** ROJO
PATTERN#: 5146108 **COLOUR:** COFFEE



SPOTTED GUM

PATTERN#: 5257107 - **COLOUR:** DUNE

SIZE: 6" x 48"/152.4mm x 1219.2mm
EMBOSS: Wire Brush
EDGE DETAIL: Micro-Bevel

DESCRIPTION

Spotted Gum has a tough, fine grain resistant to warping, making it perfect for tool handles and flooring. The design offers a rich combination of colour and visual texture suitable for the hospitality, healthcare, retail, and builders markets. The variegated quality can give it either a rich exotic or abstract contemporary look depending on the colour chosen.

Full spec available at www.aspecta flooring.com

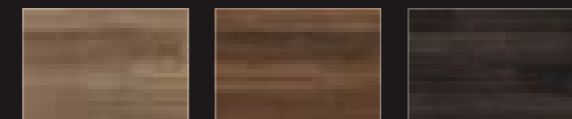
SUSTAINABILITY

Discover just how sustainable Aspecta flooring is.

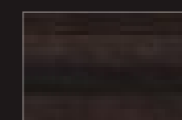
www.aspecta flooring.com/sustainability



COLOUR RANGE



PATTERN#: 5257108 **COLOUR:** SAHARA
PATTERN#: 5257109 **COLOUR:** COGNAC
PATTERN#: 5257110 **COLOUR:** ESPRESSO



PATTERN#: 5257111
COLOUR: MERLOT



BEAUMONT HICKORY

PATTERN#: 5433102 - **COLOUR:** DAWN

SIZE: 9.055" x 59.055"/230mm x 1500mm
EMBOSS: Hand Scraped
EDGE DETAIL: Micro-Bevel

DESCRIPTION

Beaumont Hickory creates the quintessential look in wood floors with its detail, depth of texture, scale, beautiful play on colour and hand scraped surface. The design's unique features will make it a favorite among interior designers.

Full spec available at www.aspecta flooring.com

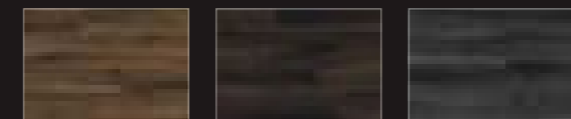
SUSTAINABILITY

Discover just how sustainable Aspecta flooring is.

www.aspecta flooring.com/sustainability



COLOUR RANGE



PATTERN#: 5433106 **COLOUR:** SUNRISE
PATTERN#: 5433107 **COLOUR:** SUNSET
PATTERN#: 5433108 **COLOUR:** DUSK



TREATED OAK

PATTERN#: 5392102 - **COLOUR:** BLEACHED

SIZE: 7.25" x 48"/184.15mm x 1219.2mm
EMBOSS: In-Register
EDGE DETAIL: Micro-Bevel

DESCRIPTION

Undeniably European in character, the deep colour and classic look is captured through the fuming process - where the wooden planks are treated in a rarefied atmosphere of ammonia or tin to alter the tannins in the wood and change the plank's natural colour. A translucent wash adds the finishing touch, bringing out the rich graining to create that unmistakable look.

Full spec available at www.aspecta flooring.com

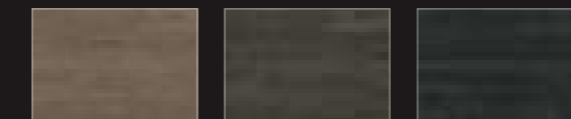
SUSTAINABILITY

Discover just how sustainable Aspecta flooring is.

www.aspecta flooring.com/sustainability



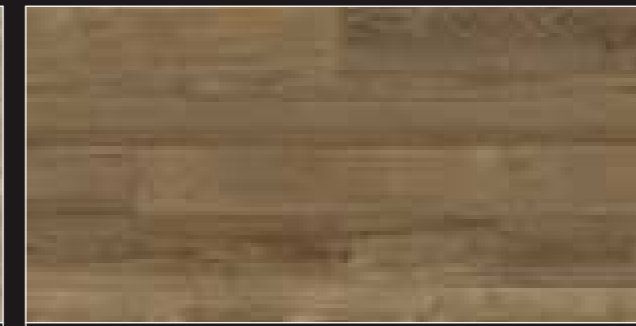
COLOUR RANGE



PATTERN#: 5392105 **COLOUR:** OILED
PATTERN#: 5392106 **COLOUR:** OXIDIZED
PATTERN#: 5392107 **COLOUR:** FUMED



PATTERN#: 5392109
COLOUR: CHARRED



CONTEMPORARY OAK

PATTERN#: 5115101 - **COLOUR:** ANTIQUE

SIZE: 4" x 36"/101.6mm x 914.4mm
EMBOSS: Barnside
EDGE DETAIL: Square

DESCRIPTION

In its natural state, oak is light so can be easily stained into a full range of colours. Its graining can vary from deep and dramatic to linear and abstract. Contemporary Oak has a fresh and understated look, different to traditional oak panelling.

Full spec available at www.aspecta flooring.com

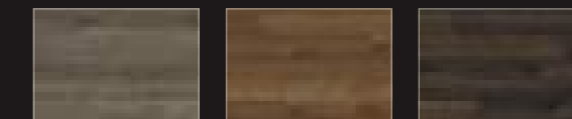
SUSTAINABILITY

Discover just how sustainable Aspecta flooring is.

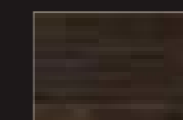
www.aspecta flooring.com/sustainability



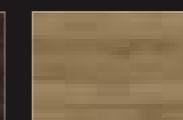
COLOUR RANGE



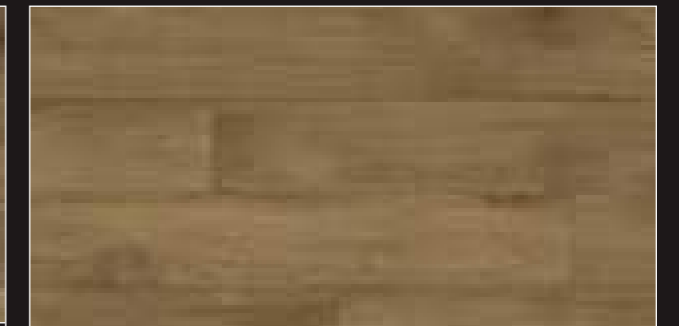
PATTERN#: 5115102 **COLOUR:** GREIGE
PATTERN#: 5115103 **COLOUR:** CARAMEL
PATTERN#: 5115104 **COLOUR:** NUTMEG



PATTERN#: 5115105
COLOUR: UMBER



PATTERN#: 5115106
COLOUR: NATURAL



PERFECT OAK

PATTERN#: 5473101 - **COLOUR:** HONEY

SIZE: 9.055" x 59.055"/230mm x 1500mm
EMBOSS: Barnside
EDGE DETAIL: Micro-Bevel

DESCRIPTION

A straight graining blend that provides a solid base to the floor and complements the overall interior. The classic design is perfect for a range of contract settings, whether hospitality, healthcare, education or office spaces.

Full spec available at www.aspecta flooring.com

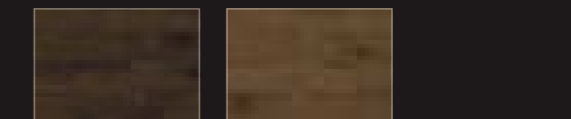
SUSTAINABILITY

Discover just how sustainable Aspecta flooring is.

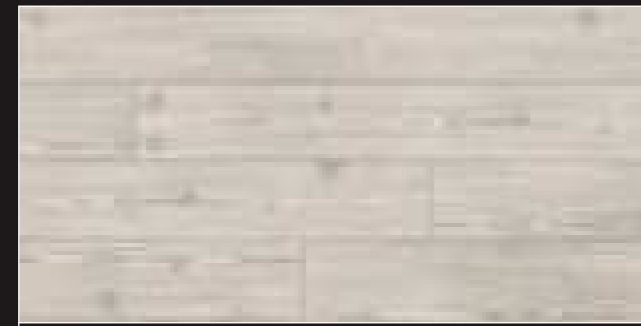
www.aspecta flooring.com/sustainability



COLOUR RANGE



PATTERN#: 5473103 **COLOUR:** SIENNA
PATTERN#: 5473105 **COLOUR:** CINNAMON



ICELAND PINE

PATTERN#: 5281101 - **COLOUR:** ARCTIC

SIZE: 6" x 48" / 152.4mm x 1219.2mm
EMBOSS: Barnside
EDGE DETAIL: Micro-Bevel

DESCRIPTION

Iceland Pine is a design that truly works for the global market with its clean, simple, yet elegant look. Offered in contemporary greys that evoke settings of concrete, asphalt and stone, you will find these new neutrals are perfect for the job.

Full spec available at www.aspecta flooring.com

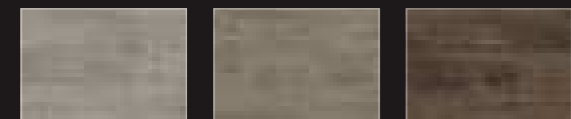
SUSTAINABILITY

Discover just how sustainable Aspecta flooring is.

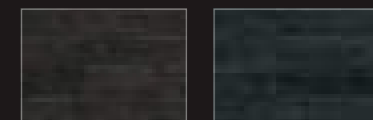
www.aspecta flooring.com/sustainability



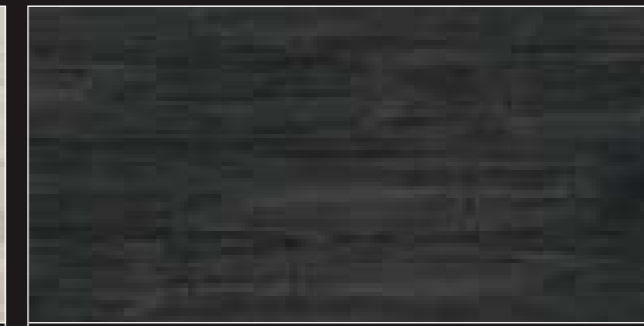
COLOUR RANGE



PATTERN#: 5281103 **COLOUR:** OYSTER
PATTERN#: 5281109 **COLOUR:** STONE
PATTERN#: 5281110 **COLOUR:** SADDLE



PATTERN#: 5281111 **COLOUR:** FUMATO
PATTERN#: 5281112 **COLOUR:** BASALT



SUMMER PINE

PATTERN#: 5382101 - **COLOUR:** CHARCOAL

SIZE: 7.25" x 48" / 184.15mm x 1219.2mm
EMBOSS: In-Register
EDGE DETAIL: Micro-Bevel

DESCRIPTION

Taken from boards that were used and then discarded, Summer Pine offers four new colours that effortlessly capture the richness of modern colour trends.

Full spec available at www.aspecta flooring.com

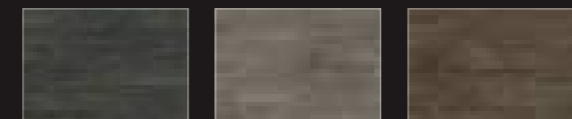
SUSTAINABILITY

Discover just how sustainable Aspecta flooring is.

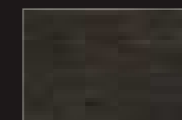
www.aspecta flooring.com/sustainability



COLOUR RANGE



PATTERN#: 5382102 **COLOUR:** EMBER
PATTERN#: 5382103 **COLOUR:** DRIFTWOOD
PATTERN#: 5382104 **COLOUR:** ASH



PATTERN#: 5382105 **COLOUR:** SMOKE



BROMLEY

PATTERN#: 5442101 - **COLOUR:** CARRARA

SIZE: 9.055" x 59.055" / 230mm x 1500mm
EMBOSS: Light Wood Tick
EDGE DETAIL: Micro-Bevel

DESCRIPTION

This unique design makes a true statement. The bold graining and sophisticated colours draw the eye without ever overpowering the space.

Full spec available at www.aspecta flooring.com

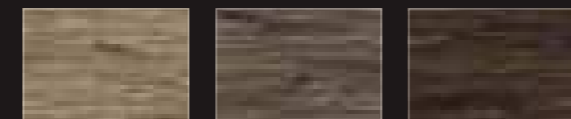
SUSTAINABILITY

Discover just how sustainable Aspecta flooring is.

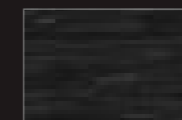
www.aspecta flooring.com/sustainability



COLOUR RANGE



PATTERN#: 5442106 **COLOUR:** SAND
PATTERN#: 5442107 **COLOUR:** CLAY
PATTERN#: 5442108 **COLOUR:** BRONZE



PATTERN#: 5442109 **COLOUR:** PATINA



MASON OAK

PATTERN#: 5383102 - **COLOUR:** AMBER

SIZE: 7.25" x 48" / 184.15mm x 1219.2mm
EMBOSS: In-Register
EDGE DETAIL: Micro-Bevel

DESCRIPTION

With its beautiful patina finish and texture, Mason Oak celebrates the European heritage of worn hand-planed planks marred by years of use. Whether these woods are found in interiors or as exterior cladding, they all feature subtle greys mixed with natural wood that offer rich colour combinations and a feeling of familiarity and comfort.

Full spec available at www.aspecta flooring.com

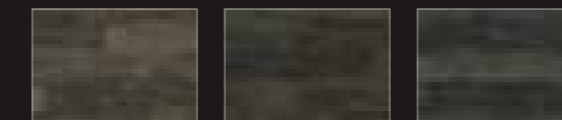
SUSTAINABILITY

Discover just how sustainable Aspecta flooring is.

www.aspecta flooring.com/sustainability



COLOUR RANGE



PATTERN#: 5383103 **COLOUR:** MIST
PATTERN#: 5383104 **COLOUR:** PUMICE
PATTERN#: 5383105 **COLOUR:** SEA



MELBOURNE ELM

PATTERN#: 5362104 - **COLOUR:** CHALK

SIZE: 7.25" x 48" / 184.15mm x 1219.2mm
EMBOSS: Barnside
EDGE DETAIL: Micro-Bevel

DESCRIPTION

Melbourne Elm offers graining and colour that can add clean lines and interest to all interiors. The design can be used to expand your oak selections or work as a standalone floor. Either way, Melbourne Elm is an exquisite foundation on which to build your design inspirations.

Full spec available at www.aspecta flooring.com

SUSTAINABILITY

Discover just how sustainable Aspecta flooring is.

www.aspecta flooring.com/sustainability



COLOUR RANGE



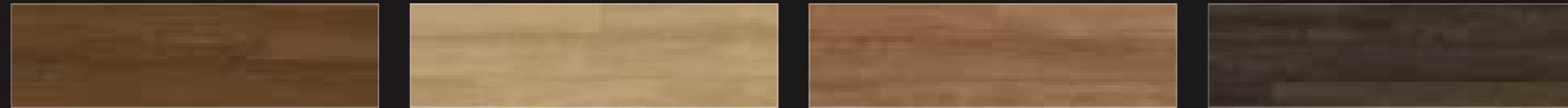
PATTERN#: 5362105 **COLOUR:** NATURAL
PATTERN#: 5362107 **COLOUR:** PEARL
PATTERN#: 5362108 **COLOUR:** AUTUMN
PATTERN#: 5362112 **COLOUR:** AMARETTO

WOODS

Designed to reflect current and near future trends the world over, the collection features 52 colours across 11 wood grain designs - including the best-selling American and European contract colours.

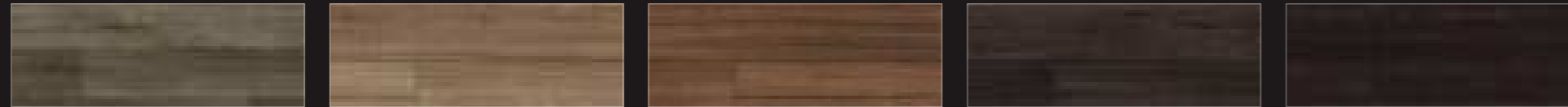
And with a range of innovative new woods boasting a more natural look than ever before, Aspecta 5 reimagines the possibilities for commercial LVT.

BLAIR CHERRY



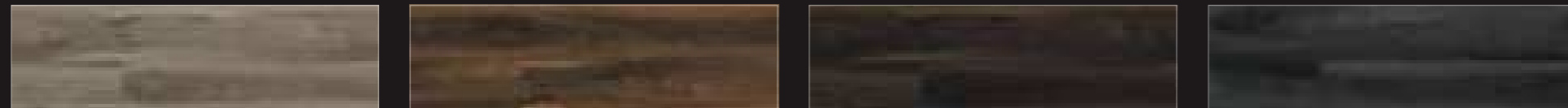
PATTERN#: 5146103 COLOUR: LIGHT PATTERN#: 5146105 COLOUR: NATURAL PATTERN#: 5146106 COLOUR: ROJO PATTERN#: 5146108 COLOUR: COFFEE

SPOTTED GUM



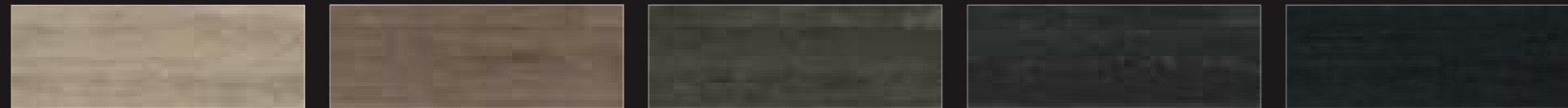
PATTERN#: 5257107 COLOUR: DUNE PATTERN#: 5257108 COLOUR: SAHARA PATTERN#: 5257109 COLOUR: COGNAC PATTERN#: 5257110 COLOUR: ESPRESSO PATTERN#: 5257111 COLOUR: MERLOT

BEAUMONT HICKORY



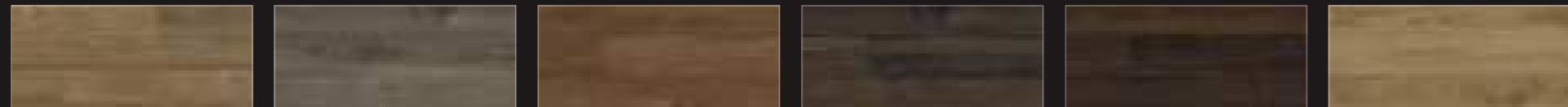
PATTERN#: 5433102 COLOUR: DAWN PATTERN#: 5433106 COLOUR: SUNRISE PATTERN#: 5433107 COLOUR: SUNSET PATTERN#: 5433108 COLOUR: DUSK

TREATED OAK



PATTERN#: 5392102 COLOUR: BLEACHED PATTERN#: 5392105 COLOUR: OILED PATTERN#: 5392106 COLOUR: OXIDIZED PATTERN#: 5392107 COLOUR: FUMED PATTERN#: 5392109 COLOUR: CHARRED

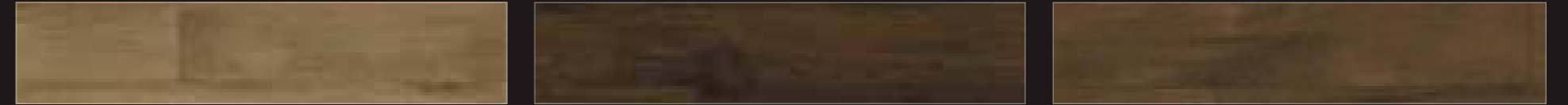
CONTEMPORARY OAK



PATTERN#: 5115101 COLOUR: ANTIQUE PATTERN#: 5115102 COLOUR: GREIGE PATTERN#: 5115103 COLOUR: CARAMEL PATTERN#: 5115104 COLOUR: NUTMEG PATTERN#: 5115105 COLOUR: UMBER PATTERN#: 5115106 COLOUR: NATURAL

WOODS

PERFECT OAK



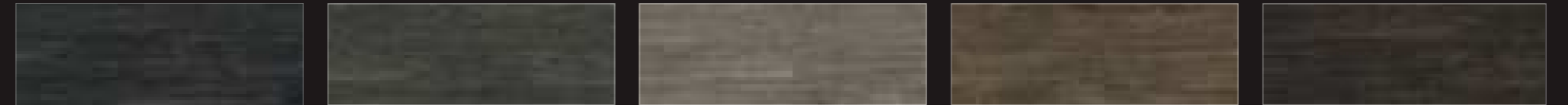
PATTERN#: 5473101 COLOUR: HONEY PATTERN#: 5473103 COLOUR: SIENNA PATTERN#: 5473105 COLOUR: CINNAMON

ICELAND PINE



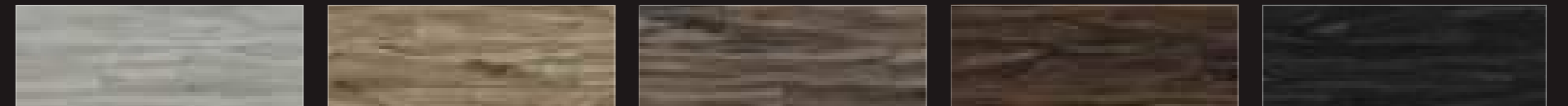
PATTERN#: 5281101 COLOUR: ARCTIC PATTERN#: 5281103 COLOUR: OYSTER PATTERN#: 5281109 COLOUR: STONE PATTERN#: 5281110 COLOUR: SADDLE PATTERN#: 5281111 COLOUR: FUMATO PATTERN#: 5281112 COLOUR: BASALT

SUMMER PINE



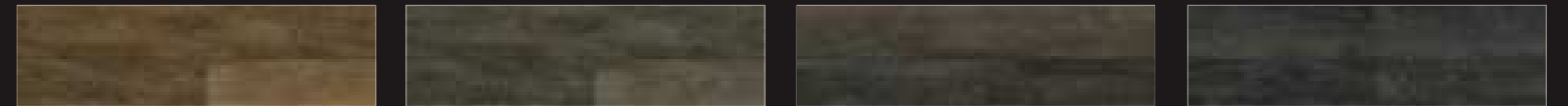
PATTERN#: 5382101 COLOUR: CHARCOAL PATTERN#: 5382102 COLOUR: EMBER PATTERN#: 5382103 COLOUR: DRIFTWOOD PATTERN#: 5382104 COLOUR: ASH PATTERN#: 5382105 COLOUR: SMOKE

BROMLEY



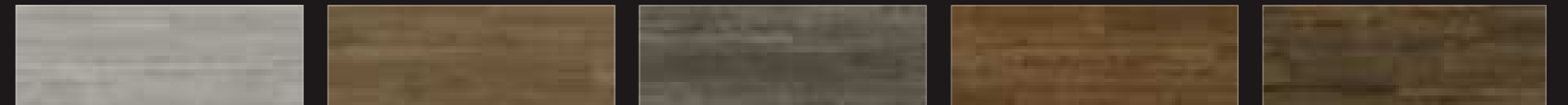
PATTERN#: 5442101 COLOUR: CARRARA PATTERN#: 5442106 COLOUR: SAND PATTERN#: 5442107 COLOUR: CLAY PATTERN#: 5442108 COLOUR: BRONZE PATTERN#: 5442109 COLOUR: PATINA

MASON OAK



PATTERN#: 5383102 COLOUR: AMBER PATTERN#: 5383103 COLOUR: MIST PATTERN#: 5383104 COLOUR: PUMICE PATTERN#: 5383105 COLOUR: SEA

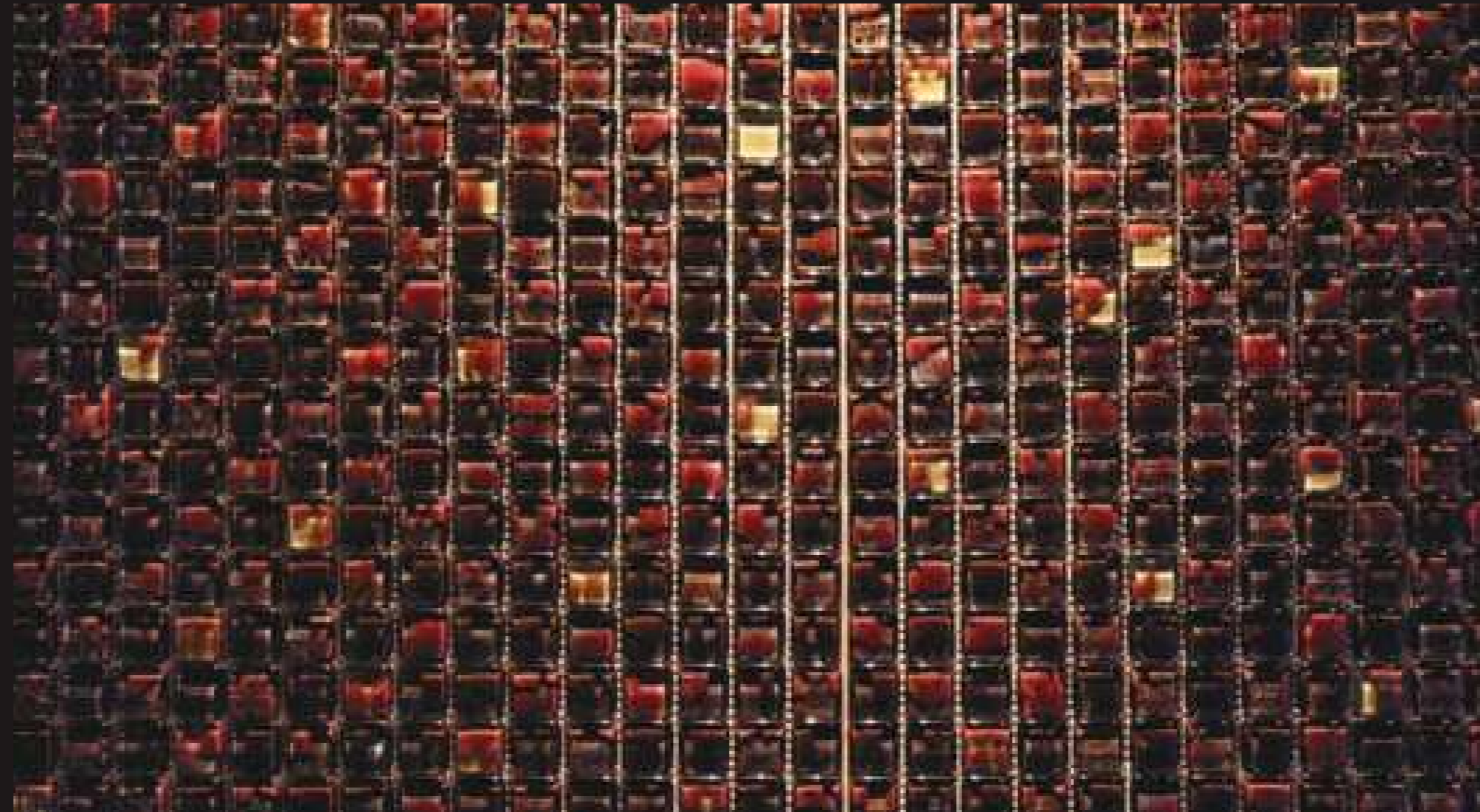
MELBOURNE ELM



PATTERN#: 5362104 COLOUR: CHALK PATTERN#: 5362105 COLOUR: NATURAL PATTERN#: 5362107 COLOUR: PEARL PATTERN#: 5362108 COLOUR: AUTUMN PATTERN#: 5362112 COLOUR: AMARETTO

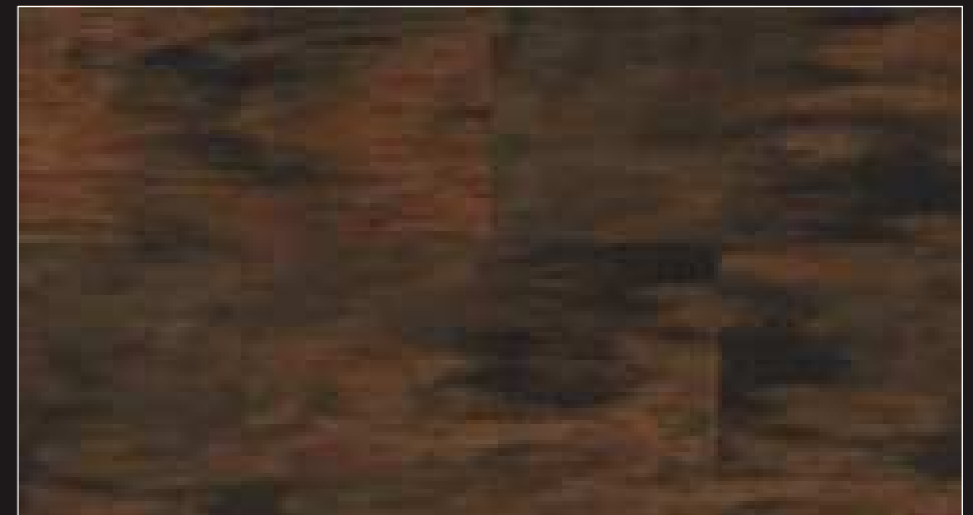


ABSTRACTS



ABSTRACT BREAKING NEW GROUND

Our collection of 24 abstracts offers a brilliantly bold alternative to wood and stone. Whether it's fresh takes on the traditional or cutting-edge designs that challenge and inspire, it's a range that comes with unlimited combinations and opportunities. You'll find all the sizes and finishes you need to go beyond the expected and bring any project to life.



TARNISH

PATTERN#: 5841411 - COLOUR: TAWNY

SIZE: 12" x 24" / 304.8mm x 609.6mm
EMBOSS: Wire Brush
EDGE DETAIL: Micro-Bevel

DESCRIPTION

A steel patina of smoky undertones with contrasting corrosive figures. The light and neutral colours slip into contemporary use for corporate, upmarket retail and restaurants, while the darker, earthier colours best match traditional and more rustic spaces such as pubs and informal eateries.

Full spec available at www.aspectaflooring.com

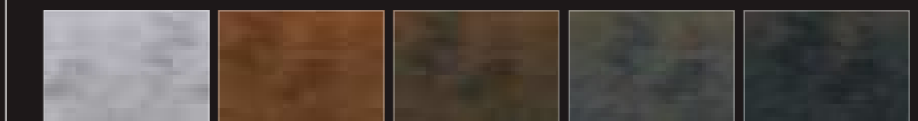
SUSTAINABILITY

Discover just how sustainable Aspecta flooring is.

www.aspectaflooring.com/sustainability



COLOUR RANGE



PATTERN#: 5841416 COLOUR: GAINSBORO PATTERN#: 5841419 COLOUR: RUST PATTERN#: 5841412 COLOUR: FLAME PATTERN#: 5841413 COLOUR: AZURE PATTERN#: 5841415 COLOUR: PHANTOM



PIERMONT

PATTERN#: 5308010 - COLOUR: EXETER

SIZE: 7.25" x 48" / 184.15mm x 1219.2mm
EMBOSS: Antiqued
EDGE DETAIL: Micro-Bevel

DESCRIPTION

This painted wood boasts a unique layered finish by combining a pearlescent effect, abstract design and wood embossing texture - which when brought together creates the most fascinating wood grain. It's bold and new so the perfect choice for retail, hospitality or office interiors.

Full spec available at www.aspecta flooring.com

SUSTAINABILITY

Discover just how sustainable Aspecta flooring is.

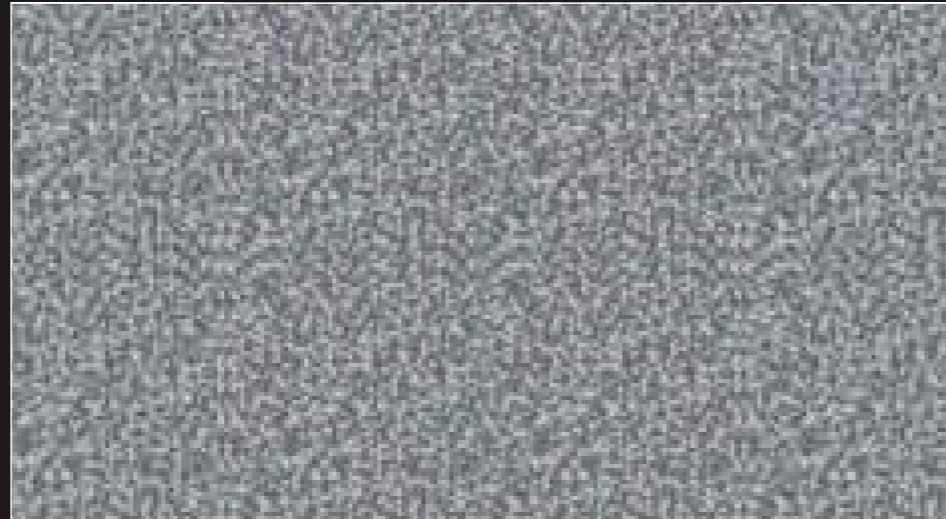
www.aspecta flooring.com/sustainability



COLOUR RANGE



PATTERN#: 5308013 COLOUR: CHOCOLATE
PATTERN#: 5308017 COLOUR: MIDNIGHT
PATTERN#: 5308011 COLOUR: COTTAGE GREY
PATTERN#: 5308019 COLOUR: CATSKILL
PATTERN#: 5308018 COLOUR: POLAR WHITE



HEXI

PATTERN#: 5740821 - COLOUR: GEODE

SIZE: 24" x 24" / 609.6mm x 609.6mm
EMBOSS: Satin
EDGE DETAIL: Square

DESCRIPTION

In a closely related range of neutrals, this unusual, geometric pattern coordinates with contemporary environments for a hint of excitement while not overwhelming other materials and surfaces.

Full spec available at www.aspecta flooring.com

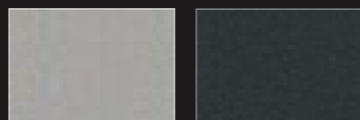
SUSTAINABILITY

Discover just how sustainable Aspecta flooring is.

www.aspecta flooring.com/sustainability



COLOUR RANGE



PATTERN#: 5740828 COLOUR: QUARTZ
PATTERN#: 5740827 COLOUR: ONYX



FRACAS

PATTERN#: 5940718 - COLOUR: RED

SIZE: 18" x 18" / 457.2mm x 457.2mm
EMBOSS: Satin
EDGE DETAIL: Square

DESCRIPTION

In a montage of triangles this design forms a textural solid that's perfect for high activity spaces with spirit.

Full spec available at www.aspecta flooring.com

SUSTAINABILITY

Discover just how sustainable Aspecta flooring is.

www.aspecta flooring.com/sustainability



COLOUR RANGE



PATTERN#: 5940716 COLOUR: VIOLET
PATTERN#: 5940715 COLOUR: BLUE
PATTERN#: 5940713 COLOUR: GREEN
PATTERN#: 5940711 COLOUR: YELLOW



CAREEN

PATTERN#: 5940728 - COLOUR: AURORA

SIZE: 18" x 18" / 457.2mm x 457.2mm
EMBOSS: Satin
EDGE DETAIL: Micro-Bevel

DESCRIPTION

The texture of textiles allows for bright colour flecks on a neutral ground to come together with colourful palettes for public spaces, educational institutions, healthcare facilities and other high activity areas.

Full spec available at www.aspecta flooring.com

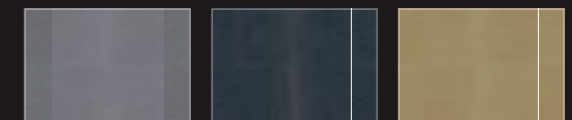
SUSTAINABILITY

Discover just how sustainable Aspecta flooring is.

www.aspecta flooring.com/sustainability



COLOUR RANGE



PATTERN#: 5940729 COLOUR: SILVER
PATTERN#: 5940724 COLOUR: NAVY
PATTERN#: 5940720 COLOUR: OCHRE

CAREEN



PATTERN#: 5940728
COLOUR: AURORA



PATTERN#: 5940729
COLOUR: SILVER



PATTERN#: 5940724
COLOUR: NAVY



PATTERN#: 5940720
COLOUR: OCHRE

FRACAS



PATTERN#: 5940716
COLOUR: VIOLET



PATTERN#: 5940715
COLOUR: BLUE



PATTERN#: 5940713
COLOUR: GREEN

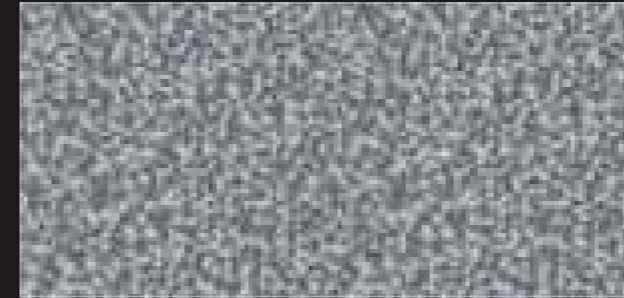


PATTERN#: 5940718
COLOUR: RED



PATTERN#: 5940711
COLOUR: YELLOW

HEXI



PATTERN#: 5740821
COLOUR: GEODE



PATTERN#: 5740828
COLOUR: QUARTZ



PATTERN#: 5740827
COLOUR: ONYX

PIERMONT



PATTERN#: 5308017
COLOUR: MIDNIGHT



PATTERN#: 5308013
COLOUR: CHOCOLATE



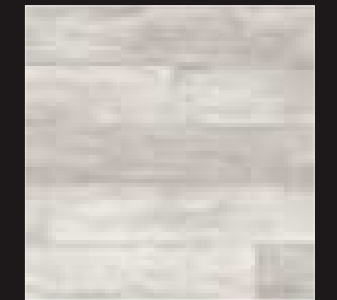
PATTERN#: 5308010
COLOUR: EXETER



PATTERN#: 5308011
COLOUR: COTTAGE GREY

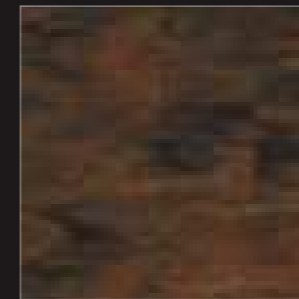


PATTERN#: 5308019
COLOUR: CATSKILL



PATTERN#: 5308018
COLOUR: POLAR WHITE

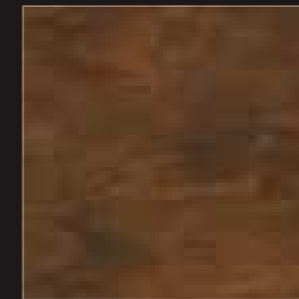
TARNISH



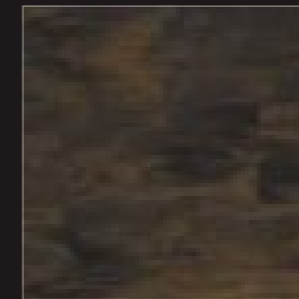
PATTERN#: 5841411
COLOUR: TAWNY



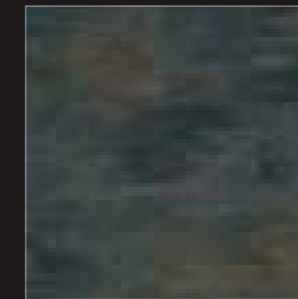
PATTERN#: 5841416
COLOUR: GAINSBORO



PATTERN#: 5841419
COLOUR: RUST



PATTERN#: 5841412
COLOUR: FLAME



PATTERN#: 5841413
COLOUR: AZURE



PATTERN#: 5841415
COLOUR: PHANTOM

COMMERCIAL WARRANTY

PRODUCTS & COVERAGE

Aspecta BV warrants that its Aspecta™ flooring will be free from manufacturing defects and, under normal use and maintenance, will not wear out through the original decorative pattern, for 25 years from the date of purchase. This limited warranty only applies provided the flooring covered by this warranty is installed and maintained according to the Aspecta™ Professional Installation and Aspecta™ Care and Maintenance Guides.

TERMS FOR WARRANTY

If a defect covered by this limited warranty is found within the warranty period and reported in writing promptly to Aspecta BV within a specified time from the date of purchase in accordance with the chart below, Aspecta BV will supply new flooring material of similar colour, pattern and quality to replace the defective area. Aspecta BV will also pay a percentage of fair market labour costs in accordance with the chart below. Aspecta BV will not pay any labour costs after ten years from the date of purchase.

PERIOD (YEARS)	1	2	3	4	5	6	7	8	9	10	11-25
MATERIAL	100%	100%	100%	100%	100%	100%	100%	100%	100%	100%	100%
LABOUR	100%	90%	80%	70%	60%	50%	40%	30%	20%	10%	0%

In case of questions regarding the terms of this Limited Warranty, please contact our Aspecta™ Customer Service Department at +31 (0)88-1662500. Aspecta BV reserves the right to inspect any flooring, request samples, secure photographs or any other information as may be required to ascertain the nature of any claim under this Limited Warranty.

Visit www.aspectaflooring.com for full warranty details.

NSF/ANSI 332

Metroflor Corporation takes sustainability very seriously and it shows with the introduction of our Aspecta line of commercial flooring. The NSF/ANSI 332 Sustainability Assessment is a multi-attribute, Life Cycle Assessment (LCA) based third-party certification programme. This programme was designed by the Resilient Floor Covering Institute (RFCI) in conjunction with NSF International around the principles of the LCA, in that it looks at products from cradle to grave. This assessment not only looks at the sustainability of the product being certified, but also considers the commitments to sustainability of the manufacturer itself. In essence, NSF/ANSI 332 gives the end-user peace of mind that both the product and the manufacturer are engaged in sustainable practices. When we chose to undergo the NSF/ANSI 332 Sustainability Assessment, we decided to aim high. NSF 332 has four certifications levels – Conformant, Silver, Gold and Platinum. We are excited to announce that Metroflor Aspecta has been awarded Platinum certification, the highest level available under the standard.

CARE & MAINTENANCE

ASPECTA™ CARE & MAINTENANCE INSTRUCTIONS

Aspecta™ LVT flooring is manufactured with a high performance UV cured urethane and ceramic bead surface treatment, which provides improved maintenance characteristics and options for the end-user in commercial environments. All floor coverings require some care to look their best and many problems can be prevented before they occur. The area of usage, type and frequency of traffic on the floor will determine the type and frequency of maintenance needed. Proper cleaning, care and maintenance are an essential part of keeping your Aspecta™ LVT floor looking attractive and safe. These guidelines will help to maintain the appearance and extend the life of your Aspecta™ LVT Commercial flooring.

ASPECTA™ FLOOR-CARE BEST PRACTICES

- Sweep daily or vacuum using only vacuums without beater bars.
- Protect the floor from tracked-in-dirt and grit particles by using walk-off mats at all outside entrances.
- In order to prevent indentations and scratches, provide glass, plastic or other non-staining cups with flat under surfaces not less than 50mm wide for the legs of heavy furniture or appliances. When using wheeled chairs, double swivel rollers are to be used (soft type).
- Remove small diameter buttons from the legs of straight chairs and replace with metal glides that have bearing surfaces no less than 25mm in diameter.
- When moving heavy fixtures or appliances over the flooring always use the proper equipment to protect it from damage.
- Never use anything coarser than 3M equivalent red cleaning pads or brushes on Aspecta™ commercial resilient flooring (see maintenance procedures).
- Protect your floor against burns. Burns from the glowing end of a cigarette, matches, or other extremely hot items can damage Aspecta™ floors.
- Do not flood floor or subject to frequent standing water.
- Avoid the use of rubber-backed mats as certain rubber compounds can permanently stain vinyl.
- Only use cleaning products which are designed for Luxury Vinyl Tile with urethane coatings.
- All Aspecta™ floors have good resistance to stains and are not affected by most common spills. However any spill should be cleaned up immediately. The longer the spilled materials are left on the floor, the greater the risk of permanent staining the floor.
- Avoid exposure to direct sunlight for prolonged periods. During peak sunlight hours, the use of the drapes or blinds is recommended. Prolonged direct sunlight can result in discolouration, and excessive temperatures might cause tiles or planks to expand.

Visit www.aspectaflooring.com for full care and maintenance details.

TECHNICAL DATA

PHYSICAL PROPERTIES & PACKAGING – PLANK

Size	4" x 36" (101.6mm x 914.4mm)	6" x 48" (152.4mm x1219.2mm)	7.25" x 48" (184.15mm x 1219.2mm)	9.055" x 59.055" (230mm x 1500mm)
Construction	Solid Vinyl Tile / LVT	Solid Vinyl Tile / LVT	Solid Vinyl Tile / LVT	Solid Vinyl Tile / LVT
Use	Commercial	Commercial	Commercial	Commercial
Wear Layer	28 mil (0.7mm)	28 mil (0.7mm)	28 mil (0.7mm)	28 mil (0.7mm)
Finish	Urethane Coating with Ceramic Bead Particles	Urethane Coating with Ceramic Bead Particles	Urethane Coating with Ceramic Bead Particles	Urethane Coating with Ceramic Bead Particles
Gauge	0.126" (3.2mm)	0.126" (3.2mm)	0.126" (3.2mm)	0.126" (3.2mm)
Pieces/Carton	30	16	15	10
Coverage/Piece	1 Sq.Ft. (0.093 Sq.M.)	2 Sq.Ft. (0.186 Sq.M.)	2.417 Sq.Ft. (0.225 Sq.M.)	3.7135 Sq.Ft. (0.345 Sq.M.)
Coverage/Carton	30 Sq.Ft. (2.787 Sq.M.)	32 Sq.Ft. (2.976 Sq.M.)	36.26 Sq.Ft. (3.375 Sq.M.)	37.135 Sq.Ft. (3.45 Sq.M.)
Coverage/Pallet	50 Cartons (1,500 Sq.Ft. / 139.35 Sq.M.)	54 Cartons (1,728 Sq.Ft. / 160.7 Sq.M.)	50 Cartons (1,813 Sq.Ft. / 168.75 Sq.M.)	60 Cartons (2,228 Sq.Ft. / 207 Sq.M.)
Coverage/Container	20 Pallets (30,000 Sq.Ft. / 2,787 Sq.M.)	18 Pallets (31,104 Sq.Ft. / 2,892.6 Sq.M.)	18 Pallets (32,634 Sq.Ft. / 3,037.5 Sq.M.)	14 Pallets (31,193 Sq.Ft. / 2,898 Sq.M.)
Limited Warranty	25-Year Commercial	25-Year Commercial	25-Year Commercial	25-Year Commercial

PHYSICAL PROPERTIES & PACKAGING – TILE

Size	12" x 24" (304.8mm x 609.6mm)	18" x 18" (457.2mm x 457.2mm)	24" x 24" (609.6mm x 609.6mm)
Construction	Solid Vinyl Tile / LVT	Solid Vinyl Tile / LVT	Solid Vinyl Tile / LVT
Use	Commercial	Commercial	Commercial
Wear Layer	28 mil (0.7mm)	28 mil (0.7mm)	28 mil (0.7mm)
Finish	Urethane Coating with Ceramic Bead Particles	Urethane Coating with Ceramic Bead Particles	Urethane Coating with Ceramic Bead Particles
Gauge	0.126" (3.2mm)	0.126" (3.2mm)	0.126" (3.2mm)
Pieces/Carton	16	18	9
Coverage/Piece	2 Sq.Ft. (0.186 Sq.M.)	2.25 Sq.Ft. (0.209 Sq.M.)	4 Sq.Ft. (0.372 Sq.M.)
Coverage/Carton	32 Sq.Ft. (2.98 Sq.M.)	40.5 Sq.Ft. (3.762 Sq.M.)	36 Sq.Ft. (3.348 Sq.M.)
Coverage/Pallet	48 Cartons (1,536 Sq.Ft. / 142.85 Sq.M.)	40 Cartons (1,620 Sq.Ft. / 150.48 Sq.M.)	44 Cartons (1,584 Sq.Ft. / 147.31 Sq.M.)
Coverage/Container	20 Pallets (30,720 Sq.Ft. / 2,857 Sq.M.)	20 Pallets (32,400 Sq.Ft. / 3,009.6 Sq.M.)	20 Pallets (31,680 Sq.Ft. / 2,946.24 Sq.M.)
Limited Warranty	25-Year Commercial	25-Year Commercial	25-Year Commercial

TECHNICAL DATA

NORTH AMERICAN STANDARDS – MANUFACTURING & USAGE (ASTM F1700)

Description	Standard(s)	Requirements	Results
Classification	ASTM F1700	Refer to Standard	Class III, Type B
Thickness	ASTM F386	±0.005 in.	Passed Requirements
Wear Layer Thickness	ASTM F410	Commercial Classification: ≥20mil (0.5mm)	Passed Requirements
Size & Squareness	ASTM F2421 / F2055	Size: ±0.016" / Linear Foot Squareness: ≤0.010"	Passed Requirements
Residual Indentation ¹	ASTM F1914	Average ≈8% Maximum - Any Sample ≤10%	Exceeds Requirements
Flexibility	ASTM F137	No cracks/breaks (1 in. / 25.4mm Mandrel)	Exceeds Requirements
Dimensional Stability	ASTM F2199	≤0.020" / Linear Foot	Exceeds Requirements
Chemical Resistance	ASTM F925	No more than "Slight Change"	Exceeds Requirements
Resistance to Heat	ASTM F1514	Average ΔE ≤8.0	Exceeds Requirements
Resistance to Light	ASTM F1515	Average ΔE ≤8.0	Exceeds Requirements

NORTH AMERICAN STANDARDS – SAFETY & PERFORMANCE

Description	Standard(s)	Requirements	Results
Flammability & Smoke Emissions	ASTM E648 (Critical Radiant Flux)	Class I: ≥0.45 W/cm ² Class II: ≥0.22 W/cm ²	Class I
	ASTM E662 (Smoke Density)	Flaming: ≤450 Non-Flaming: ≤450	Passed Requirements (Flaming & Non-Flaming)
Product – Content Safety	CDPH/EHLB/Standard v1.1 (VOCs/TVOCs, Formaldehyde)	Refer to Standard	Passed Requirements
	ASTM F963 (Heavy Metal Presence)	Refer to Standard	Passed Requirements
Mold & Microbial Resistance	ASTM D6329 & UL 2824	Refer to Standard	Highly resistant to mold and microbial growth as validated by The GREENGUARD Environmental Institute
Coefficient of Friction/ Slip Resistance ¹	ASTM D2047 (James Machine, Dry)	>0.5 (ASTM & OSHA) >0.6 (ADA Recommended)	Exceeds Requirements
Static Load Limit ¹	ASTM F970	±0.005", 250-Lbs. Load	≥1,000 lbs. (Exceeds Requirements)
Abrasion Resistance ¹	ASTM D4060	N/A	Average: 32,000 cycles ²

NOTES

(1) These Standards/Tests have been conducted for the following Embosses: Barnside, Handscraped, Honed Stone, In-Register (Plank), Light Wood Tick, Satin

(2) Abrasion Resistance (ASTM D4060): Results vary with Emboss

TECHNICAL DATA

NORTH AMERICAN STANDARDS – SOUND












Description	Standard(s)	Assembly/Setup	Results
Airborne Sound Transmission Loss of Building Partitions and Elements & Classification for Rating Sound Insulation	ASTM E90 & ASTM E413	Prevail™ GDP Underlayment and a Wood Joist Floor/Ceiling Assembly with a 1" thick Gypsum Concrete Topping	Sound Transmission Class (STC): 55
		Wood Joist Floor/Ceiling Assembly with a 1" thick Gypsum Concrete Topping	Sound Transmission Class (STC): 54
Impact Sound Transmission through Floor-Ceiling Assemblies using the Tapping-Machine & Standard Classification for Determination of Impact Insulation Class (IIC)	ASTM E492 & ASTM E989	Prevail™ GDP Underlayment and 6" Concrete Slab	Impact Insulation Class (IIC): 49
		6" Concrete Slab	Impact Insulation Class (IIC): 29
Effectiveness of Floor Coverings in Reducing Impact Sound Transmission Through Concrete Floors	ASTM E2179	Prevail™ GDP Underlayment and 6" Concrete Slab	Impact Insulation Class (IIC): 51 ΔIIC 23
		6" Concrete Slab	Impact Insulation Class (IIC): 38 ΔIIC 10

NORTH AMERICAN STANDARDS – SUSTAINABILITY


Certification/Program	Description
FloorScore® CHPS 01350 LEED EQ 4.3	This product is FloorScore® Certified (SCS-FS-03333) and has thus been found to comply with the volatile organic compound emissions criteria of the California Section 01350 standard. FloorScore® Certification can also be used as an alternative path to obtaining LEED EQ 4.3 credit.
NSF/ANSI 332	This product is NSF/ANSI 332 Platinum Certified (SCS-RF-03378) and thus meets benchmark standards for social, environmental and economic sustainability as defined by the NSF/ANSI 332 standard. The assessment evaluated product design, product manufacturing, long-term value, end-of-life management, corporate governance, and innovation.

TECHNICAL DATA

EUROPEAN/INTERNATIONAL STANDARDS – MANUFACTURING & USAGE (EN ISO 10582)

Description	Standard(s)	Symbol	Requirements	Results
Identification	EN ISO 10582	N/A	Type I: Wear Layer Binder Content ≥80%	Meets Requirements
Classification (Level of Use)	EN ISO 10582 & EN ISO 10874		Domestic – Heavy (Class 23) Wear Layer (Nominal): ≥0.30mm Thickness (Nominal): ≥1.5mm	Meets Requirements (Nominal)
			Commercial – Very Heavy (Class 34) Wear Layer (Nominal): ≥0.70mm Thickness (Nominal): ≥2.0mm	Meets Requirements (Nominal)
			Light Industrial – Heavy (Class 43) Wear Layer (Nominal): ≥0.70mm Thickness (Nominal): ≥2.0mm	Meets Requirements (Nominal)
Size, Squareness & Straightness	EN ISO 24342		Size: ≤0.15% from Nominal (Max: 0.5mm) Squareness/Straightness: If Size ≤400mm: ≤0.25mm If Size >400mm: ≤0.35mm	Passed Requirements
Thickness	EN ISO 24346 / EN 428		Average: +0.13mm / -0.10mm from Nominal Individual (Any Sample): ±0.15mm from Average	Passed Requirements
Mass per Unit Area	EN ISO 23997 / EN 430		+13% / -10% from Nominal	Passed Requirements
Dimensional Stability	EN ISO 23999 / EN 434		≤0.25%	Exceeds Requirements
Curling	EN ISO 23999 / EN 434	N/A	≤2mm	Exceeds Requirements
Flexibility	EN ISO 24344 Method A / EN 435		No cracks (20mm Mandrel)	Meets Requirements
Residual Indentation	EN ISO 24343-1 / EN 433		≤0.1mm	Exceeds Requirements
Castor Chair ¹	ISO 4918		After 25,000 cycles: Delamination - None Appearance - No more than “Slight Change”	Meets Requirements
Colour Fastness to Light	ISO 105-B02, Method 3		≥Grade 6	Exceeds Requirements

EUROPEAN/INTERNATIONAL STANDARDS – CE CERTIFICATION / TESTING





Description	Standard(s)	Symbol	Requirements	Results
CE Certification	EN 14041		Refer to Standards Below	Passed Requirements (All)
Reaction to Fire (and Smoke Production)	EN 13501-1 EN ISO 9239-1 EN ISO 11925-2		B_n – s1 Classification Critical Flux: ≥8.0kW/m ² Flame Spread: ≤150mm within 20s Smoke value as % x min: ≤750	Passed Requirements
Content of PCP ³	EN 14041	N/A	<5ppm	Passed Requirements
Formaldehyde Emission	EN 717-1		Class E1: Release ≤0.124mg/m ³	Passed Requirements
Slip Resistance (Dry) ¹	EN 13893		Class DS: Coefficient of Friction ≥0.30	Exceeds Requirements

NOTES

- (1) These Standards/Tests have been conducted for the following Embosses: Barnside, Handscraped, Honed Stone, In-Register (Plank), Light Wood Tick, Satin
(3) PCP = pentachlorophenol

TECHNICAL DATA

EUROPEAN/INTERNATIONAL STANDARDS – AUXILIARY PERFORMANCE & SAFETY

Description	Standard(s)	Symbol	Requirements	Results
Slip Resistance (Wet) ¹	DIN 51130	N/A	Grade R9: ≥6° and <10°	Meets or Exceeds Requirements ⁴
Chemical Resistance	EN ISO 26987 / EN 423		N/A	No effect
Thermal Resistance	ISO 8301 / EN 12667		N/A	ISO 8301 – 0.19881 W / mK at 25°C EN 12667 – 0.21149 W / mK at 25°C
Abrasion/Wear Resistance ¹	EN 660-2		Class T: F _v ≤2.0mm ³ / 100r Class P: F _v ≤4.0mm ³ / 100r	Class T or Class P ⁵
Sound Reduction	EN ISO 10140-3 & ISO 717-2 / EN ISO 140-8		N/A	ΔL _w = 11dB (Weighted Reduction of Impact Sound Pressure Level) C _L = -6dB (Spectrum Adaptation)
Product-Content Safety	REACH SVHC Test	N/A	N/A	Extensive REACH SVHC Testing has been conducted. Contact us for more details.

NOTES

- (1) These Standards/Tests have been conducted for the following Embosses: Barnside, Handscraped, Honed Stone, In-Register (Plank), Light Wood Tick, Satin
(4) Slip Resistance-Wet (DIN 51130): Results vary with emboss
(5) Abrasion/Wear Resistance (EN 660-2): Results vary with emboss: **Class T** – Handscraped, In-Register (Plank), Light Wood Tick, Satin; **Class P** – Barnside & Honed Stone

CHEMICAL & STAIN RESISTANCE

ASTM F1700 AGENT-LIST	5 MINUTES			24 HOURS		
	Surface Dulling	Surface Attack	Colour Change	Surface Dulling	Surface Attack	Colour Change
Staining Agent						
5% Acetic Acid (White Vinegar)	0	0	0	0	0	0
5% Ammonia	0	0	0	0	0	0
5% Hydrochloric Acid	0	0	0	0	0	0
5% Phenol	0	0	0	0	0	0
5% Sodium Hydroxide	0	0	0	0	0	0
70% Isopropyl (Rubbing) Alcohol	0	0	0	0	0	0
Bleach	0	0	0	0	0	0
Gasoline	0	0	0	0	0	0
Kerosene	0	0	0	0	0	0
Mineral Oil	0	0	0	0	0	0
Olive Oil	0	0	0	0	0	0
Sulfuric Acid	0	0	0	0	0	0

For more chemical and stain resistance information visit www.aspecta flooring.com

KEY: 0 = No change

INSTALLATION RECOMMENDATIONS

For detailed information on the proper installation guidelines for Aspecta™ please visit www.aspecta flooring.com

RECOMMENDED USE

HEALTHCARE

Cafeteria/Dining	HR
Chapel	HR
Corridors	HR
Critical/Intensive Care	NR
Delivery Rooms (Maternity Ward)	NR
Dialysis	R
Elevators	HR
Emergency Room Areas	NR
Exam/Procedure Rooms	R(1)
Gift Shop	HR
Hyperbaric Room	NR
Lobbies	HR
Nurses Station	HR
Office/Administrative/Conference Rooms	HR
Operating Rooms	NR
Patient Rooms	R(2)
Pharmacy	HR
Physical Therapy/Occupational Therapy - Dry	HR
Physical Therapy/Occupational Therapy - Wet	NR
Ramps/Ramped Corridors (Dry)	NR
Restrooms	NR
Scrub Areas	NR
Speech Therapy	HR
Stairways/Landings	R
Staff Lounge	HR
Testing Areas (MRI, CAT-Scan, X-Ray, Etc.)	R(1)
Utility/Storage Room/Filing	HR
Waiting Rooms	HR

TRANSPORTATION

Airport/Railway/Bus Terminals - Retail Shops	R
Civic/Convention Centres	HR
Museums/Cultural Centres	HR

EDUCATIONAL/INSTITUTIONAL

Auditoriums	HR
Cafeteria/Dining	HR
Classrooms/Lecture Halls	HR
Computer Rooms	R(1)
Corridors	HR
Dormitory Rooms	HR
Food Service Area	R(3)
Gymnasium	R

EDUCATIONAL/INSTITUTIONAL (continued)

Labouratories	HR
Library	HR
Locker Rooms (No Spikes)	NR
Multipurpose Room/Cafeteriums	HR
Office/Administrative/Conference Rooms	HR
Physical Therapy/Occupational Therapy	HR
Ramps/Ramped Corridors (Dry)	NR
Restrooms	NR
Showers/Shower Rooms	NR
Stairways/Landings	R
Teachers' Lounge	HR
Utility/Storage Areas	HR
Vestibule/Entryway/Foyers	R

ASSISTED LIVING/MILITARY HOUSING/ LIGHT COMMERCIAL

Activity Rooms/Common Areas	HR
Beauty Salon/Barber Shop - Work Area/Floor	R
Corridors	HR
Daycare Areas	HR
Dining Areas	HR
Doctor/Dentist Office - Examination Rooms	R
Doctor/Dentist Office - Reception	HR
Lobbies	HR
Physical Therapy - Dry	HR
Residence Bathrooms	R
Residence Kitchens	HR
Residence Rooms/Barracks	HR

HOSPITALITY

Around Whirlpool/Spas	NR
Casino Floors (Tables/Slots)	HR
Corridors	HR
Dance Halls/Night Clubs - Dance Floor	R
Dining Room	HR
Elevators	R
Exercise Rooms	HR
Guest Bathrooms	R
Guest Rooms	HR
Lobby	HR
Lounge	HR
Stairways/Landings	R
Vending Areas	HR

RETAIL/SALES

Automobile Showrooms	R(4)
Checkout/Cash Wrap	R
Food Service	NR
Frozen Food	R
Indoor Mall Common Areas	R
Produce Area	R
Sales Floor - Department Stores	HR
Sales Floor - Grocery	R
Sales Floor - Mass Merchant	HR
Specialty Shops/Areas	HR

LIGHT INDUSTRIAL

Clean Rooms	NR
Computer Repair Lab	NR
Electronic Testing Lab	NR
Electronics Manufacturing	NR
Environmental Conditioning Unit	R
Photo Processing	HR
Production Labouratory	R
Research Labouratory	R
Small Parts Assembly	R
Sterile Packaging	NR
Warehouse	NR

CORPORATE / OFFICE

Computer Room	R(1)
Copier Room	HR
Corridors	HR
Elevators	HR
Lobby	HR
Lunchrooms	HR
Offices/Conference Rooms	HR
Restrooms	NR
Stairways/Landings	R
Utility/Storage Rooms	HR

NOTES

- (1) Not recommended for sensitive areas requiring conductive or dissipative flooring
- (2) Two-part epoxy adhesive to be used underneath beds
- (3) Not recommended for commercial kitchen areas or food preparation areas
- (4) Protect area directly underneath tires from staining

KEY

- HR = HIGHLY RECOMMENDED
R = RECOMMENDED
NR = NOT RECOMMENDED

HERE'S TO THE NEXT 100 YEARS.

FIND THE FULL STORY AT
WWW.ASPECTAFLOORING.COM