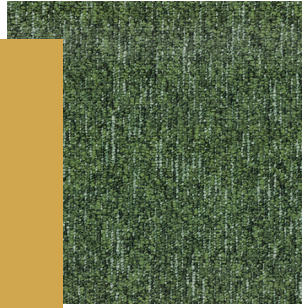


# BLOQ

creative  
carpet tiles



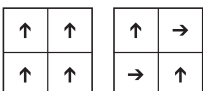
## THE BINARY FLOW

### SPECIFICATIONS

|                               |  |
|-------------------------------|--|
| <b>TYPE OF MANUFACTURE</b>    | Tufted Patterned Loop Pile 1/10"                               |
|                               | ISO 2424   |
| <b>PILE FIBER COMPOSITION</b> | 100% Polyamide 6   |
|                               | ISO 2424 Solution Dyed Nylon made by Aquafil                   |
| <b>SECONDARY BACKING</b>      | Bitback, Modified Bitumen                                      |
|                               | ISO 2424 70% Recycled Content                                  |
| <b>DIMENSION</b>              | 50 x 50 cm   |
|                               | EN ISO 24342   |
| <b>PILE WEIGHT</b>            | 650 g/m <sup>2</sup>   |
|                               | ISO 8543   |
| <b>SURFACE PILE WEIGHT</b>    | 380 g/m <sup>2</sup>   |
|                               | ISO 8543   |
| <b>TOTAL WEIGHT</b>           | 4 400 g/m <sup>2</sup>   |
|                               | ISO 8543   |
| <b>TOTAL THICKNESS</b>        | 6.9 mm   |
|                               | ISO 1765   |
| <b>PILE HEIGHT</b>            | 3.8 mm   |
|                               | ISO 1766   |
| <b>PILE DENSITY</b>           | 0.100 g/m <sup>3</sup>   |
|                               | ISO 8543   |
| <b>NUMBER OF TUFTS</b>        | 152 000 /m <sup>2</sup>  |
|                               | ISO 1763   |
| <b>DIMENSIONAL STABILITY</b>  | ≤ 0.2%   |
|                               | ISO 2551   |
| <b>NUMBER OF COLOURS</b>      | 18   |
| <b>PACKAGING</b>              | Box: 20 tiles / 5 m <sup>2</sup><br>Pallet: 200 m <sup>2</sup> |

### PERFORMANCE

|                                 |   |
|---------------------------------|---|
| <b>CLASSIFICATION</b>           | 33  |
|                                 | EN 1307   |
| <b>LUXURY RATING</b>            | LC1   |
|                                 | EN 1307   |
| <b>CASTOR CHAIR RATING</b>      | A: Intensive use  |
|                                 | EN 985  |
| <b>FIRE CLASSIFICATION</b>      | B <sub>fl</sub> -s1                                     |
|                                 | EN 13501-1  |
| <b>IMPACT SOUND INSULATION</b>  | ΔL <sub>w</sub> : 26 dB                                 |
|                                 | EN ISO 10140-3  |
| <b>SOUND ABSORPTION</b>         | Frequency Hz 125 250 500 1000 2000 4000                 |
|                                 | EN ISO 354 α <sub>s</sub> 0.01 0.03 0.08 0.22 0.32 0.39 |
| <b>NOISE REDUCTION</b>          | α <sub>w</sub> : 0.20                                   |
|                                 | EN ISO 354  |
| <b>PERMANENT ANTISTATIC</b>     | ≤ 2 kV  |
|                                 | ISO 6356  |
| <b>TRANSVERSAL RESISTANCE</b>   | ≤ 1 X 10 <sup>9</sup> Ohm                               |
|                                 | ISO 10965   |
| <b>THERMAL RESISTANCE</b>       | 0.080 m <sup>2</sup> K/W                                |
|                                 | ISO 8302  |
| <b>COLOUR FASTNESS TO LIGHT</b> | ≥ 7   |
|                                 | EN ISO 105-B02  |
| <b>COLOUR FASTNESS TO WATER</b> | ≥ 4   |
|                                 | EN ISO 105-E01  |
| <b>RUBBING FASTNESS</b>         | ≥ 4   |
|                                 | EN ISO 105-X12  |
| <b>GUT N° PRODIS</b>            | 63C72CE9  |



Made in the Netherlands (EU)

EMISSIONS DANS L'AIR INTERIEUR: A+

AQUAFIL synthetic fibres and polymers

**EN 14041**  
DOP: 1137-127662  
NB: 2401  
20  
**CE**  
Bfl-s1 DS PCP NA HCHO  
λ23 λ23 λ23  
For use as floor covering in buildings.  
BLOQ  
De Blokmat 29  
NL - 8281 JH Genemuiden

**BSI 14041**  
DOP: 1137-127662-UK  
AB: 2401  
20  
**UK CA**  
Bfl-s1 NCS PCP DL  
HCHO λ23 λ23 λ23  
FOR USE AS FLOOR COVERING IN BUILDINGS.  
BLOQ  
De Blokmat 29  
NL - 8281 JH Genemuiden

All rights reserved to alter technical specifications.