

—
BLOQ

creative
carpet tiles



THE BINARY
GRAIN

BLOQ

creative
carpet tiles



© Rijksmuseum, Genemuiden



© Het Rijksmuseum, Frans Hals

Nice to know

The colour ochre in the BLOQ logo refers to the rushes and the colour palette of the Golden Age in Holland.

Our story

Being part of Betap, BLOQ can build on more than **100 years of experience** in the flooring sector. Betap grew from a local manufacturer of rush mats in 1918 to an internationally renowned carpet manufacturer.

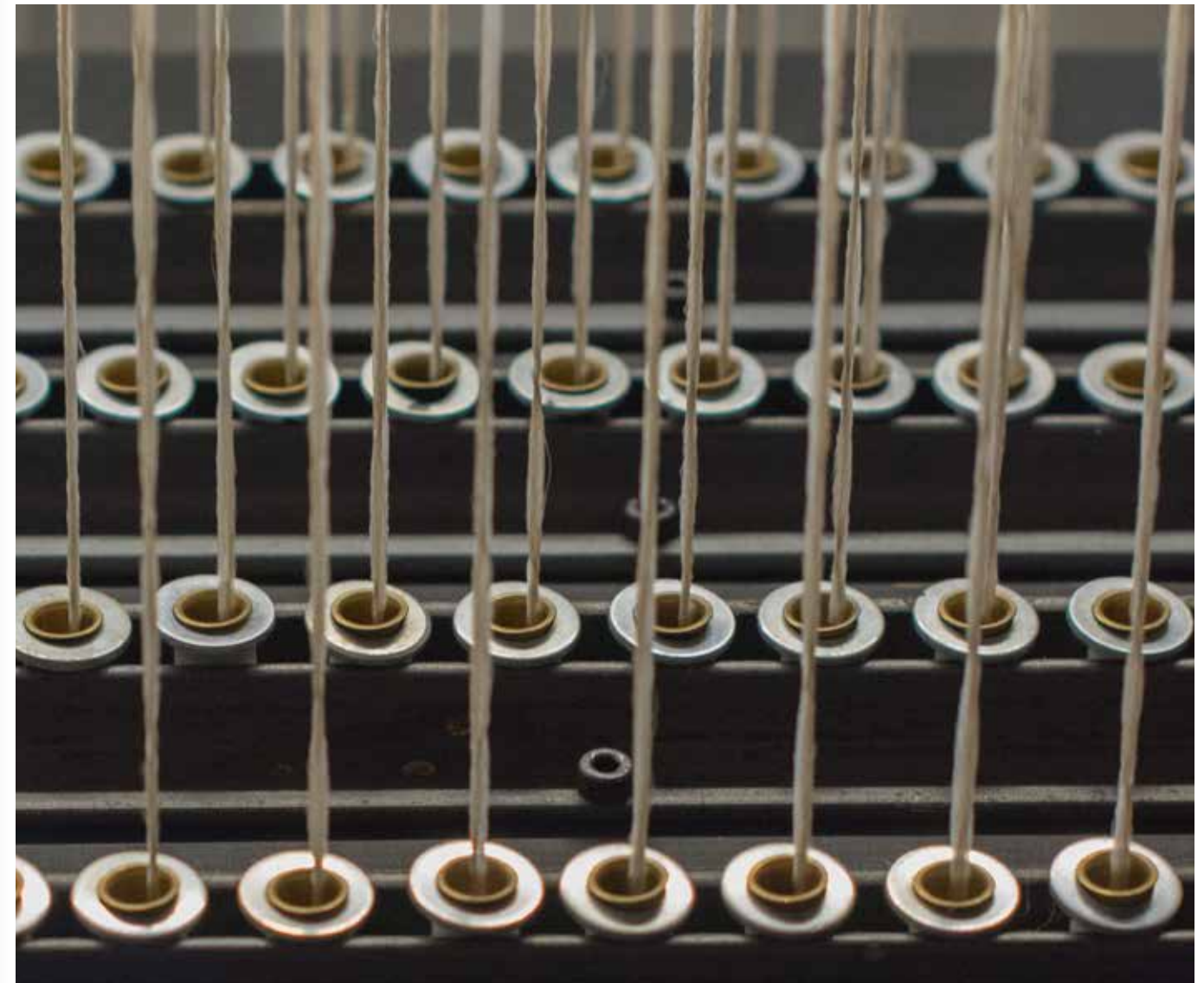
Working with some of the most reputable architects, designers and commercial carpet partners, Betap's **high-traffic commercial carpet** is used across the world in prestigious office buildings, hotels, universities, museums and various leisure applications. Betap is your partner of choice for commercial carpet.



High-end production line

Group Betap is an **innovative carpet manufacturer** in Genemuiden (The Netherlands) with a vertically integrated production line for tufted and non-woven floor coverings, as well as an own yarn production line.

With BLOQ, we are developing and producing **creative carpet tiles** that comply with the stringent regulations for the commercial market. We offer high-performance tiles focused on office projects, that are sound absorbing and have the best results in fire safety. Our products are also produced following the strictest standards in sustainability.



The Binary

GRAIN is part of The Binary collection, a design collection group existing of **five contemporary patterns**, built from a light and dark colour (binary). Living and working environments have never been so close.

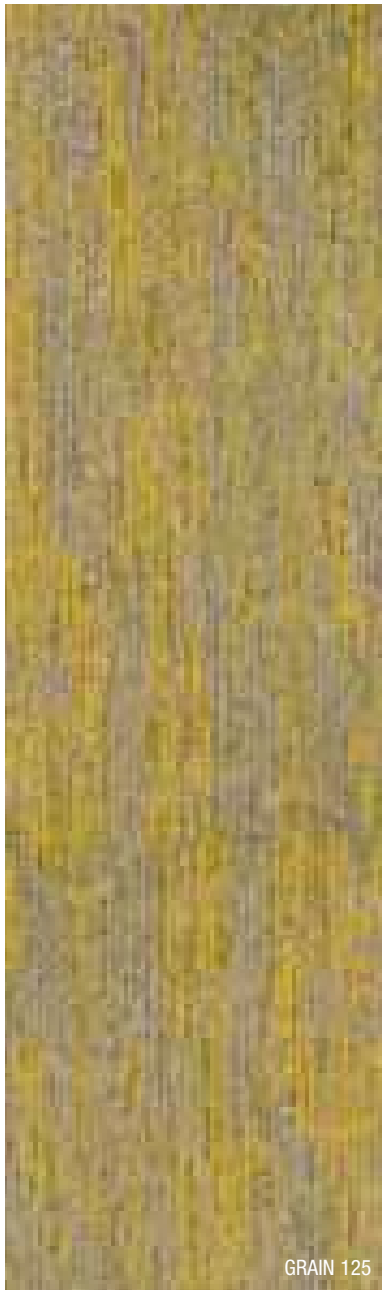
Meet The Binary family: FLOW, BALANCE, RENEGADE, SCULPTURE and GRAIN. The Binary collections match perfectly with our The Workplace collection, which uses the same colours.



*Mixing two yarns:
a light & dark colour*

Grain ↗

THE BINARY
GRAIN



Inspiration
is everywhere

Grain looks



In shape

GRAIN comes in **carpet planks** of 25 x 100 cm.

The pattern is **two-toned** and is inspired by **waving fields of grain** and grasses. GRAIN matches perfectly with Scandinavian styles.

Let's play with planks!



GRAIN 111, 124, 125, 617

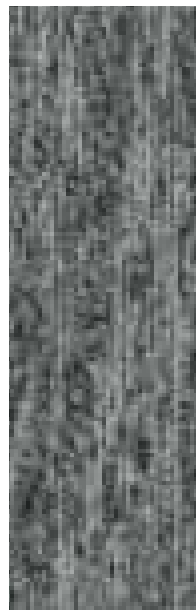


GRAIN 111, 124

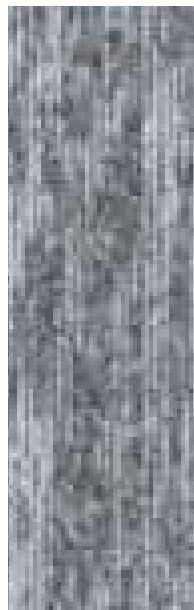
Colour range

GRAIN comes in **18 matching colours**. Use the colours pure and go for one colour tone, or play with colours and mix according to your taste.

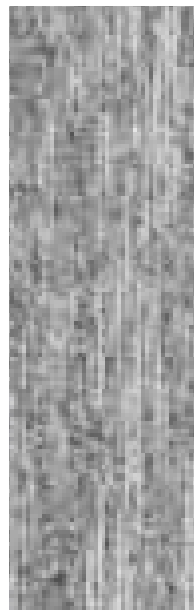
Tone on tone or bright and bold? GRAIN has it all.



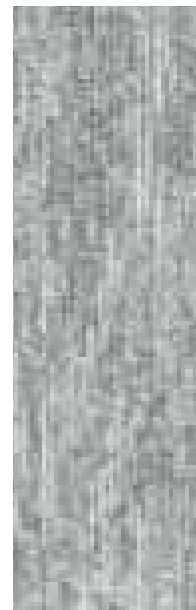
942 SHADOW



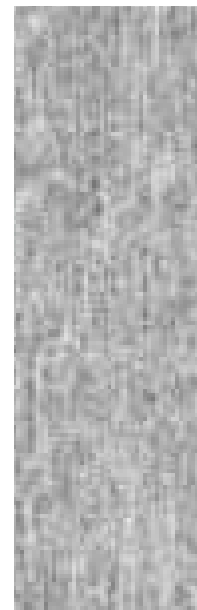
937 ASH



921 ELEPHANT



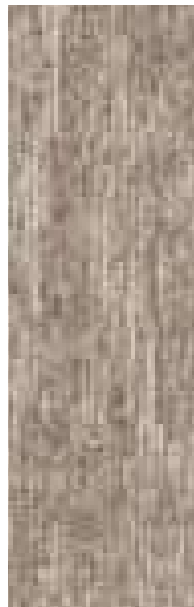
911 MOUSE



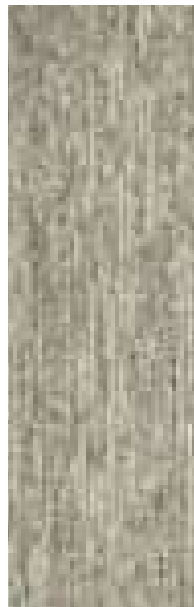
907 IRON



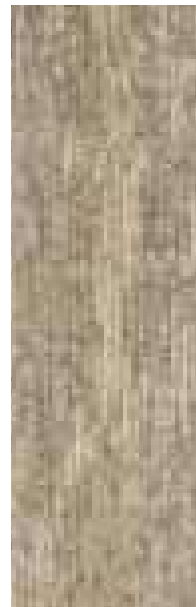
812 COFFEE



135 NUTMEG



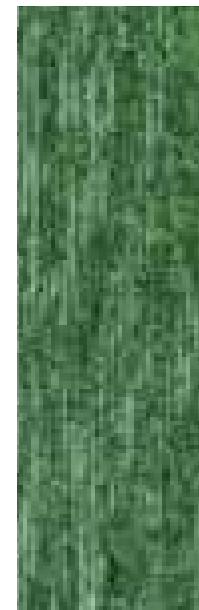
123 GREIGE



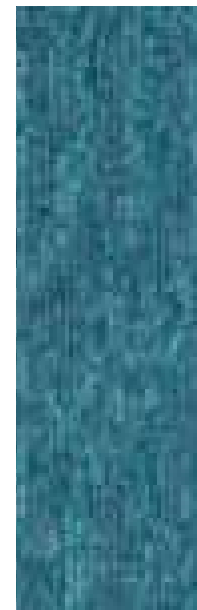
124 WALNUT



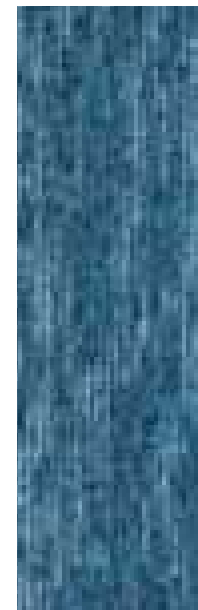
130 SAHARA



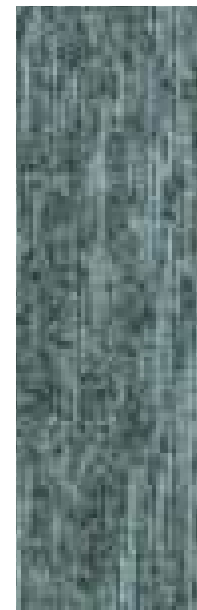
617 MOSS



530 SEA



522 ATLANTIC



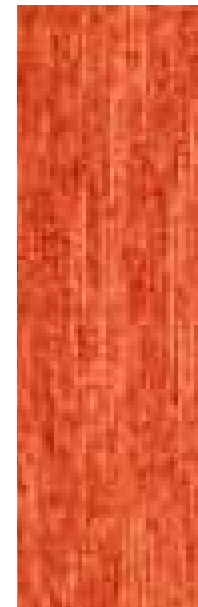
946 GRAPHITE



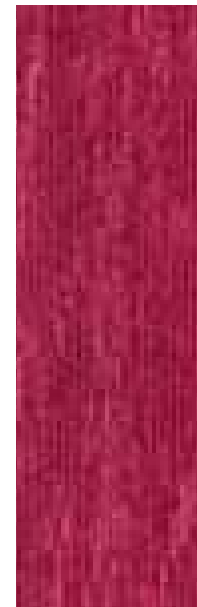
111 TRUFFLE



125 FLAX



218 PAPRIKA



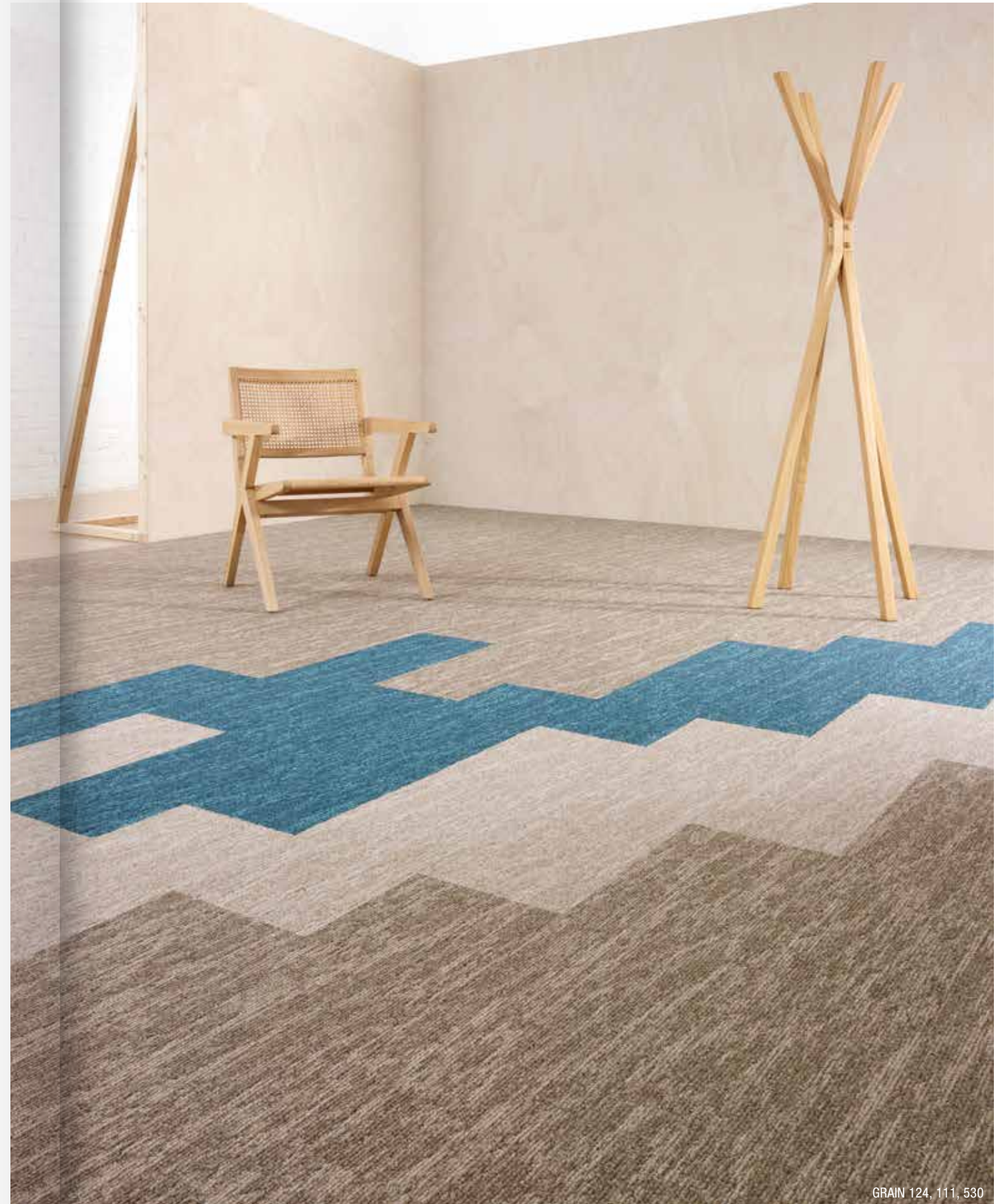
410 FUCHSIA



Creative with planks

The shape of the carpet planks can be used in a **creative or classic way**. The long shape provides ample possibilities. Go for a placement in **one way, ashlar, herringbone or random**.

The chosen direction of the carpet planks can **make a room look larger**. Horizontally placed planks make a narrow room wider, vertically placed planks make any space longer. A diagonal placement will enlarge rooms.





GRAIN 124, 111, 530



GRAIN 111, 124, 125, 617



GRAIN 111, 124, 125, 617

Herringbone pattern

Highlights

BITBACK

BLOQ uses **Bitback**, Modified Bitumen, which consists of 70% recycled content.

Tiles made with Bitback deliver great acoustic results such as **high sound absorption and insulation**, as well as **noise reduction**. Therefore carpets made with this sustainable backing contribute substantially to personal health and comfort.



AQUAFIL
synthetic fibres and polymers

SOLUTION DYED YARNS

BLOQ uses 100% Polyamide 6 Solution Dyed Nylon from **Aquafil**, the best and leading supplier for carpet manufacturers. Solution dyed means **better colour fastness** and the best results to light and water.

LIGHT REFLECTANCE VALUES

Light Reflectance Value (LRV) is a scale that measures visible and usable light reflected from an illuminated surface. The percentage identifies how much light a colour reflects or absorbs. 0% reflects no visible light, 100% reflects all light.

COLOUR	LRV _{av}	L
111	30.60	62.17
123	15.10	45.78
124	17.65	49.07
125	14.39	44.78
130	29.04	60.81
135	12.16	41.48
218	10.57	38.85
410	6.29	30.14
522	4.66	25.74

COLOUR	LRV _{av}	L
530	9.01	36.00
617	7.77	33.50
812	10.41	38.58
907	21.61	53.61
911	21.36	53.34
921	18.78	50.43
937	12.19	41.51
942	8.65	35.30
946	4.77	26.07



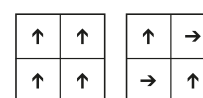
THE BINARY GRAIN

SPECIFICATIONS

TYPE OF MANUFACTURE	Tufted Patterned Loop Pile 1/10"
ISO 2424	
PILE FIBER COMPOSITION	100% Polyamide 6
ISO 2424	Solution Dyed Nylon made by Aquafil
SECONDARY BACKING	Bitback, Modified Bitumen
ISO 2424	70% Recycled Content
DIMENSION	25 x 100 cm
EN ISO 24342	
PILE WEIGHT	650 g/m ²
ISO 8543	
SURFACE PILE WEIGHT	380 g/m ²
ISO 8543	
TOTAL WEIGHT	4 400 g/m ²
ISO 8543	
TOTAL THICKNESS	6.9 mm
ISO 1765	
PILE HEIGHT	3.8 mm
ISO 1766	
PILE DENSITY	0.100 g/m ³
ISO 8543	
NUMBER OF TUFTS	152 000 /m ²
ISO 1763	
DIMENSIONAL STABILITY	≤ 0.2%
ISO 2551	
NUMBER OF COLOURS	18
PACKAGING	Box: 10 tiles / 2,5 m ² Pallet: 200 m ²

PERFORMANCE

CLASSIFICATION	33
EN 1307	
LUXURY RATING	LC1
EN 1307	
CASTOR CHAIR RATING	A: Intensive use
EN 985	
FIRE CLASSIFICATION	B _f -s1
EN 13501-1	
IMPACT SOUND INSULATION	ΔL _w : 26 dB
EN ISO 10140-3	
SOUND ABSORPTION	Frequency Hz 125 250 500 1000 2000 4000
EN ISO 354	α _s 0.01 0.03 0.09 0.21 0.35 0.40
NOISE REDUCTION	α _w : 0.20
EN ISO 354	
PERMANENT ANTISTATIC	≤ 2 kV
ISO 6356	
TRANSVERSAL RESISTANCE	≤ 1 X 10 ⁹ Ohm
ISO 10965	
THERMAL RESISTANCE	0.080 m ² K/W
ISO 8302	
COLOUR FASTNESS TO LIGHT	≥ 7
EN ISO 105-B02	
COLOUR FASTNESS TO WATER	≥ 4
EN ISO 105-E01	
RUBBING FASTNESS	≥ 4
EN ISO 105-X12	
GUT N° PRODIS	6DFDDB9E



All rights reserved to alter technical specifications.



Part of **betap**[®]

www.bloq.nl